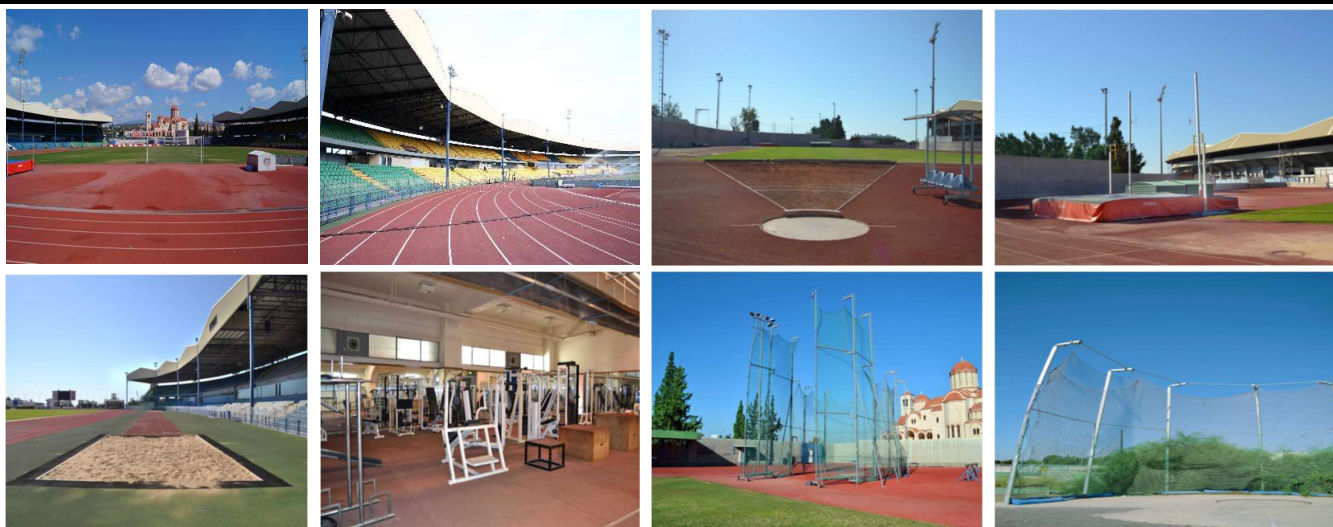


Limassol is an ideal destination for an athletics training camp, as it offers world class facilities and mild weather conditions that allow athletes to train outdoors almost all year round.

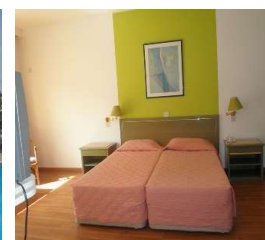
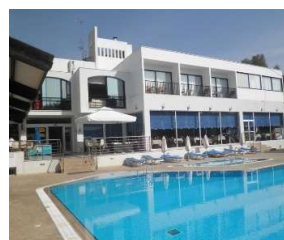
### TSIRION ATHLETICS STADIUM

Track & Field Stadium	Adjacent Throws Facilities
8 Oval track lanes + Steeplechase track lane Javelin throw facility 3 x Long and triple jump facilities Pole-Vault facility and landing mat High jump and landing mat Weights room/Ice therapy	4 Oval lanes Discus throw circle, protective cage and landing sector 2 x Long and triple jump facilities Javelin throw facility 2 x Shot put facility throwing circle, stop board & landing sector <b>Hammer throw circle</b> , protective cage and landing sector



### HOTEL ACCOMMODATION

**3\* PARK BEACH HOTEL:** Located on Limassol's sandy beach, **just a 10 minute drive to the stadium**, the newly refurbished Park Beach Hotel offers air-conditioned rooms with balcony or terrace. It has a large outdoor swimming pool, a sauna and a gym. Rooms are equipped with a satellite TV and a private bathroom with bathtub. Some rooms also enjoy sea view. The hotel includes both an indoor and outdoor restaurant. The poolside bar offers light snacks and drinks, and hosts live music events most of the evenings. Within a short stroll, guests can find shops and restaurants. Limassol's town centre is 3 km away.



**4\* ATLANTICA MIRAMARE HOTEL:** This holiday resort enjoys a peaceful setting overlooking the beach in Limassol. **The Tsirion track facilities are just a 10 minute drive away. (500m).** Soak up the sun here or in the spacious outdoor swimming pool. An indoor pool is also available for the cooler months. Dine on à la carte dishes in the open air at the restaurant, or choose from lighter options at the poolside brasserie. A total of 6 drinking and dining venues are found on site, ranging from the lobby bar to a steak restaurant. Each room is air-conditioned and opens onto a private balcony. The services of Limassol resort centre are found 5 km from the hotel.



Please contact us for accommodation rates, as prices depend upon dates of travel and total numbers travelling

Guide line prices for April from: **£399.00p.p** – full board incl. airport & stadium transfers

Prices are also subject to a **£100.00p.p (7 nights)** grant offered by the Cyprus Deputy Ministry – application required

#### Additional Services:

Training at the stadium: **£10.00 per person per day / Flights range from: £200.00 - £350.00 per person**

**HOW TO BOOK** - Bookings should be made using our Booking Form or by email. A deposit of £125.00 per person is required for the accommodation and training camp arrangements. Flight deposits vary and for some 'low cost' and scheduled flights, the full flight price may be payable at the time of booking. Cheques should be made payable to "Track and Field Tours Ltd".