

**EUROPEAN CHAMPS  
BERLIN**

Final Programme  
Bulletin I – Nov 2017

6 – 12 AUGUST **2018**

TOUR CODE **TFGER1/ 18**

**T&FT BERLIN 2018 EVENT**  
FULL PACKAGES INCLUDE

The Berlin 1936 Olympic Stadium hosts the European Championships for the first time providing an ideal opportunity to visit the ever fascinating German capital. For many regular clients it will be a welcome return to this interesting city that as recently as 2009 hosted the IAAF World Championships at this historic venue. All seating is covered in this much renovated venue.

**EVENT TICKETS:**

In 2009 T&FT organised 350+ fans and, with our bookings for the annual ISTAF event, we are very familiar with this venue and have secured the same prime seating areas that we had in 2009. We have taken advantage of the group booking deals that we pre-paid as far back as March 2017 that allows us to offer excellent value and the best priced seating package options available – **no other organised tour group made this financial commitment at that time in order to be able to make this offer to fans - prices valid whilst stocks last.**

**BERLIN HOTELS**

Based upon our 2009 experience we are offering some of the hotel options that we used then. In particular the very highly rated Berlin Melia hotel which our clients so enjoyed back in 2009. **We have our four hotels in two locations** as post-1989, and the demise of the famous Wall, Berlin effectively has two centres. **The Berlin Melia is in the historic centre in East Berlin** which is now once again the heart of the city of which Friederichstrasse station is a major transport hub very close to all major historical landmarks. **We also have a three hotel "hub" within 150m of each other in the West Berlin Kurfurstendamm district:** this is still a significant part of the city but not the centre it once was in the 1980s of the previously divided city - hence hotels are now less expensive than the East Berlin location. **All hotels are well positioned for travelling to the stadium in the far west of the city: with the excellent rail and transportation network all clients are within 25-30 mins of the competition venue.**

- ◆ **Hotels on BB basis**  
Select from 4 properties and 2 locations
- ◆ **Berlin Travel Card**  
Free rail, bus & tram travel during your stay
- ◆ **Supporters Event Statistics Guide**  
Be the best informed fans at the event
- ◆ **T&FT daily Berlin 2018 newsletters**  
Event reports, results, news & views
- ◆ **Berlin City Information Pack**  
Maps and comprehensive sightseeing information
- ◆ **Berlin City Bus Tour**  
Guided T&FT bus tour to get to know the city
- ◆ **T&FT Berlin Event Party – Sun 12 Aug**  
Lunch event - good food & drink – Athletics guests
- ◆ **T&FT Staff services**  
Directing and sharing your event experience
- ◆ **Event Tickets – in prime locations selected by T&FT and purchased with the maximum group discount – prices valid whilst stocks last**



APPROVED PROVIDER



**A1 Berlin Melia Hotel – 4\* Superior Business**

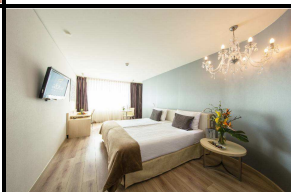
A business class 360 room hotel located in the heart of the redeveloped centre of Berlin - just 100m from Friederichstrasse station, 400m from the major museums and 900m from the Reichstag and Brandenburg Gate. All rooms have a bathroom with a bath / shower, WC and hairdryer, air conditioning, multi-channel TV, telephone, internet access / WiFi, air conditioning, mini-bar and safe. Breakfast is buffet style. There is a choice of a la carte and buffet restaurants and bars including a popular tapas bar. The gym offers a range of equipment with a sauna. **An excellent hotel.**



**A1**  
**BERLIN MELIA HOTEL**  
Friederichstrasse  
District

**A2 Abba Hotel – 4\* Standard**

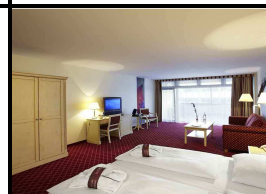
This 214 room stylish and also highly rated hotel is located within a few minutes' walk of the Kurfurstendamm. All rooms are spacious and have a bathroom with a bath / shower, WC and hairdryer, air conditioning, multi-channel TV, telephone, internet access / WiFi, air conditioning, mini-bar and safe. The larger family rooms are ideal for three persons sharing. Breakfast is buffet style. There is a first class restaurant & bar and a fitness gym with a sauna and jacuzzi. **The centre of our West Berlin "T&FT 3 hotels hub"**.



**A2**  
**ABBA HOTEL**  
Kurfurstendamm  
District

**A3 Mercure Chateau Berlin – 4\* Standard**

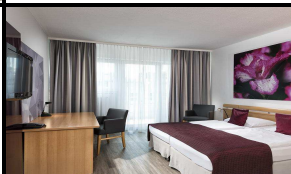
The 4\* Mercure Chateau Berlin boutique style hotel has just 72 rooms and is located within a few minutes' walk of the Kurfurstendamm. All rooms are spacious and equipped with a bathroom with a bath or shower, WC and hairdryer, air conditioning, multi-channel TV, telephone, internet access / WiFi, air conditioning, mini-bar and safe. There are larger family rooms – as depicted in the photo – that are ideal for three persons sharing. Breakfast is buffet style. In the vicinity there is a wide choice of restaurants and bars including those in our T&FT Abba hotel hub just 120m from the Mercure.



**A3**  
**MERCURE HOTEL**  
Kurfurstendamm  
District

**A4 Mark Apart Hotel – 3\* Standard**

This 122 room hotel is located in a quiet area but within a few minutes of the Kurfurstendamm. Rooms have a bathroom with a bath or shower, WC and hairdryer, multi-channel TV, telephone, and are internet access / WiFi accessible. Rooms vary in size from 16.5 sq.m for singles to 28 – 33 sq.m for twin / double rooms. Family Apartments are 40 sq.m have 2 bedrooms and are ideal for 3 or 4 persons. Breakfast is buffet style. Our T&FT Abba hotel hub is just 80m away. A good budget option.



**A4**  
**MARK APART HOTEL**  
Kurfurstendamm  
District

**POST-CHAMPIONSHIP TOURS: Poland / Krakow, Slovakia & Vienna 13 – 19 AUG 7 days / 6 nights or 4 days / 3 nights**

We have a choice of options departing by private bus from Berlin on Monday 13 Aug. You can choose from either an extended **7 days / 6 nights tour with 3 nights visiting Wroclaw & Krakow in Poland, 1 night in Bratislava / Slovakia to conclude with 2 nights in Vienna:** you will fly back to the UK from Vienna. Or you can book the first 3 nights of these arrangements travelling with the group and then fly back to the UK from Krakow. **The schedule for both options is:**

- Mon 13 Aug:** Dep. Berlin by bus for Wroclaw with an **afternoon guided tour of Wroclaw** – stay 1 night at the **4\* Scandic hotel**. Evening meal included.
- Tues 14 Aug:** Dep Wroclaw for Krakow. **Afternoon tour of the world famous Wieliczka Salt Mine**. Check-in at the **4\* INXD Design hotel** for 2 nights
- Wed 15 Aug:** **Morning guided walking tour of Krakow**. In the afternoon visit the **Aushwitz-Birkenau Memorial with a guided visit of the Nazi camp**
- Thur 16 Aug:** For clients booking the 4 days / 3 nights Poland package you will transfer to Krakow airport for return flights to the UK. Extra nights can be booked. Clients on full tour travel by bus into Slovakia and visit **Trencin and it's castle before en route to Bratislava** – stay 1 night at **4\* ART William hotel**.
- Fri 17 Aug:** **Morning guided tour of Bratislava**. Late afternoon travel by high speed Danube catamaran to Vienna – stay 2 nights at **4\* Mercure City hotel**.
- Sat 18 Aug:** **Morning guided tour of Vienna** – afternoon an optional **Art & Coffee House** tour will be available.
- Sun 19 Aug:** Free time in Vienna before return flights to the UK. Extra nights can be booked.

**7 days / 6 nights Option: Single £ 989 pp Twin / Double £ 799 pp 4 days / 3 nights Option: Single £ 499 pp Twin / Double £ 399 pp**

<b>BERLIN 2018 FULL PACKAGE OPTION PRICES</b>			<b>OPT 1X</b>	<b>OPT 1</b>	<b>OPT 2</b>	<b>OPT 3</b>	<b>OPT 4</b>	<b>FULL PACKAGES</b> Packages include <u>all</u> of the services as listed overleaf – designed to provide fans with the best possible event experience so that all you have to do is relax and enjoy the stadium competition and Berlin city sightseeing. <b>OPTS 1X &amp; 1 the Berlin Tour is a 5 hrs "Berlin Grand Bus Tour" on Mon 6 Aug dep. all hotels &gt; ending at the stadium in time for the first session.</b> <b>OPTS 2 – 4 the Berlin bus tour is a 2 ½ hrs "Berlin Panoramic Tour" on 7 or 10 Aug</b>
<b>All prices are Per Person</b>			<b>AUG 4 – 13</b>	<b>AUG 5 – 13</b>	<b>AUG 6 – 13</b>	<b>AUG 6 – 9</b>	<b>AUG 9 – 13</b>	
<b>HOTEL</b>	<b>Room Type</b>	<b>Persons</b>	<b>9 NIGHTS</b>	<b>8 NIGHTS</b>	<b>7 NIGHTS</b>	<b>3 NIGHTS</b>	<b>4 NIGHTS</b>	<b>BASIC PACKAGES</b> These packages <u>exclude</u> the items listed below that can then be purchased on an ad hoc basis: Berlin Travel Card: Up to 9 days £ 45 7 days £ 35 4 days £ 25 Berlin Grand Bus Tour - 6 Aug £ 50 Berlin Panoramic Tour - 7 or 10 Aug £ 25 Berlin Event Party £ 50
<b>A1 BERLIN MELIA</b>	Single	1 person	£ 1529	£ 1399	£ 1229	£ 549	£ 759	
	Twin / Double	2 persons	£ 1149	£ 1049	£ 949	£ 429	£ 599	
<b>A2 ABBA</b>	Single	1 person	£ 1299	£ 1199	£ 1069	£ 479	£ 699	
	Twin / Double	2 persons	£ 959	£ 879	£ 779	£ 349	£ 499	
	Family Room	3 persons	£ 829	£ 769	£ 689	£ 319	£ 449	
<b>A3 MERCURE CHATEAU BERLIN</b>	Single	1 person	£ 1099	£ 999	£ 899	£ 399	£ 599	
	Twin / Double	2 persons	£ 849	£ 789	£ 699	£ 299	£ 459	
	Family Room	3 persons	£ 699	£ 659	£ 599	£ 259	£ 399	
<b>A4 MARK APART HOTEL</b>	Single	1 person	£ 1029	£ 929	£ 829	£ 359	£ 539	
	Twin / Double	2 persons	£ 769	£ 699	£ 629	£ 269	£ 419	
	2 Bedroom Apt	3 persons	£ 769	£ 699	£ 629	£ 269	£ 419	
	2 Bedroom Apt	4 persons	£ 659	£ 599	£ 539	£ 229	£ 359	
<b>BASIC PACKAGE DISCOUNT per person</b>			<b>- £ 115</b>	<b>- £ 115</b>	<b>- £ 95</b>	<b>- £ 40</b>	<b>- £ 80</b>	

<b>FLIGHT OPTIONS:</b>		<b>Flights Per Day</b>	<b>T&amp;FT SELECTED OUTBOUND FLIGHTS to combine with &gt;&gt;&gt;&gt;&gt;&gt;</b>				<b>RETURN to UK</b>	<b>AIRFARES *</b>	
<b>UK to / from BERLIN</b> TXL = Tegel SXF = Schoenefeld			<b>4 AUG</b> ex UK / arr. Berlin	<b>5 AUG</b> ex UK / arr. Berlin	<b>6 AUG</b> ex UK / arr. Berlin	<b>9 AUG</b> ex UK / arr. Berlin	<b>13 AUG</b> Ex Berlin / arr. UK	<b>One Way from</b>	<b>Return from</b>
<b>EASYJET to SXF</b>	<b>Gatwick</b>	<b>up to 4</b>	08.20 / 11.30 hrs	08.25 / 11.35 hrs	08.40 / 11.50 hrs	06.40 / 09.45 hrs	10.15 / 11.20 hrs	£ 59	£ 109
	<b>Luton</b>	<b>1 or 2</b>	06.30 / 09.20 hrs	13.25 / 16.15 hrs	06.30 / 09.20 hrs	06.30 / 09.20 hrs	09.55 / 10.50 hrs	£ 49	£ 95
	<b>Bristol</b>	<b>1</b>	-	13.10 / 16.15 hrs	13.10 / 16.15 hrs	13.10 / 16.15 hrs	16.45 / 17.50 hrs	£ 69	£ 129
	<b>Manchester</b>	<b>1 or 2</b>	08.00 / 11.00 hrs	18.05 / 21.05 hrs	06.50 / 09.50 hrs	06.50 / 09.50 hrs	10.20 / 11.25 hrs	£ 49	£ 95
	<b>Glasgow</b>	<b>1</b>	-	07.15 / 10.30 hrs	10.35 / 13.50 hrs	07.15 / 10.30 hrs	14.20 / 15.40 hrs	£ 49	£ 95
<b>Edinburgh</b>	<b>1</b>	09.45 / 12.55 hrs	13.10 / 16.20 hrs	09.45 / 12.55 hrs	09.45 / 12.55 hrs	13.25 / 14.40 hrs	£ 49	£ 95	
<b>RYANAIR to SXF</b>	<b>Stansted</b>	<b>up to 4</b>	07.50 / 10.40 hrs	07.50 / 10.40 hrs	06.30 / 09.30 hrs	06.30 / 09.30 hrs	10.00 / 11.00 hrs	£ 79	£ 139
	<b>East Midlands</b>	<b>1</b>	-	-	06.30 / 09.30 hrs	-	10.05 / 11.20 hrs	-	£ 109
	<b>Manchester</b>	<b>1</b>	12.10 / 15.05 hrs	12.05 / 15.00 hrs	12.10 / 15.05 hrs	15.15 / 18.10 hrs	10.50 / 11.45 hrs	£ 49	£ 95
	<b>Glasgow</b>	<b>1</b>	19.20 / 22.30 hrs	14.15 / 17.25 hrs	14.15 / 17.25 hrs	-	12.40 / 13.50 hrs	£ 49	£ 95
<b>BA to TXL</b>	<b>Heathrow</b>	<b>up to 7</b>	08.45 / 11.35 hrs	08.45 / 11.35 hrs	08.45 / 11.35 hrs	07.15 / 10.05 hrs	12.25 / 13.30 hrs	£ 59	£ 109
<b>FLYBE to TXL</b>	<b>Birmingham</b>	<b>1 or 2</b>	06.30 / 09.15 hrs	16.55 / 19.40 hrs	07.15 / 10.00 hrs	07.15 / 10.00 hrs	10.35 / 11.35 hrs	£ 59	£ 109

\* Fares incl. booking fees but exclude luggage fees which vary by carrier / routing but range from £ 40 - 50 return per 20 kg – all fares are subject to change

<b>ADD-ON TOUR FLIGHTS</b>	From <b>KRAKOW</b> to Gatwick, Bristol & Manchester / <b>EASYJET</b> Stansted & Edinburgh / <b>RYANAIR</b> From <b>VIENNA</b> to Gatwick, Luton & Manchester / <b>EASYJET</b> Birmingham, Heathrow & Edinburgh / <b>BA &amp; Austrian Airlines</b> <i>These one way flights costing from £ 60 - £ 100 can be combined with one way flights to Berlin to create an "open jaw" return flight</i>
<b>AIRPORT Transfers</b>	If you choose to pre-book return airport / hotel transfers with the listed T&FT selected flights we will invoice all clients: <b>£ 10 one way / £ 20 return</b> <i>For any ad hoc transfer timings or requests we reserve the right to charge a supplement – you will be notified in good time if this is necessary.</i>

**OPTIONAL EXCURSIONS PROGRAMME:**  
All of our event packages include a **guided Berlin Bus Tour** with our "Berlin Grand Bus Tour" on Mon 6<sup>th</sup> Aug a particularly comprehensive excursion. Hence our optional tours will focus on those aspects of Berlin that are more esoteric or excursions to the regions surrounding Berlin.  
Our options will fit in with the stadium competition schedule as standard tourism market options do not fit into the "sightseeing windows" between sessions or make allowance for eating on those days when there are two sessions. As with 2009 we will seek to arrange departures and drop-offs at the stadium tailor-made to the needs of fans. As we have such a regular client base with many that will have booked excursions whilst in Berlin in 2009 we will offer a wide selection of options including some new ones – **all clients will receive this information by early 2018 to then be booked in advance of the championships.**  
**Berlin City Walking Tours**  
Cold War Berlin / Hitler & the Third Reich / Museum Island Tour  
**Berlin & Brandenburg / Saxony Region Tours**  
Potsdam – Prussian Empire & Palaces Tour  
Wittenburg – Martin Luther & the Reformation  
Wannsee & Sachsenhausen "Final Solution" – a lesson from history  
Dresden & Meissen – Baroque Architecture & Porcelain Tour

**COMPETITION SCHEDULE – detailed timetable available:**

<b>Mon</b>	<b>6 Aug</b>		16.00 – 18.30 hrs
<b>Tues</b>	<b>7 Aug</b>	09.30 – 13.15 hrs	18.30 – 22.00 hrs
<b>Wed</b>	<b>8 Aug</b>	09.30 – 15.45 hrs	17.45 – 22.00 hrs
<b>Thurs</b>	<b>9 Aug</b>	09.30 – 15.15 hrs	19.00 – 22.00 hrs
<b>Fri</b>	<b>10 Aug</b>	10.00 – 15.15 hrs	19.00 – 22.00 hrs
<b>Sat</b>	<b>11 Aug</b>	09.00 – 12.30 hrs / Race Walks	20.00 – 22.00 hrs
<b>Sun</b>	<b>12 Aug</b>	09.00 – 12.30 hrs / Marathons	19.00 – 22.00 hrs

<b>TICKET PRICES:</b>		<b>PER SESSION</b>		<b>ALL SESSIONS</b>
<b>Category</b>	<b>Location</b>	<b>AM</b>	<b>PM</b>	<b>6 - 12 AUG</b>
<b>PREMIUM</b>	<b>Home Straight</b> Finish Line Rows 13 - 19	£ 30	£ 105	£ 575
<b>CAT 1</b>	<b>Back Straight</b> Opp. Finish Line Rows 19 - 26	£ 20	£ 70	£ 395
<b>CAT 2</b>	<b>First Bend</b> 1500m Start / Pole Vault Row 20	£ 15	£ 55	£ 295
<b>CAT 3</b>	<b>Second Bend</b> Mid-Bend by High Jump Row 20	£ 10	£ 30	£ 175
<b>GBR SUPPORTERS BERLIN 2018 POLO SHIRT – optional</b>				<b>£ 25 per shirt</b>

<b>TRAVEL INSURANCE:</b>	Prices for clients up to 65 yrs: <b>5 Days £15.00 10 days £ 21.00 17 Days £ 24.00</b> – Clients 65+ yrs on request
<b>PAYMENT SCHEDULE:</b>	Tour deposits + full payment for event tickets + optional flights & travel insurance due at the time of booking
<b>BERLIN TOUR DEPOSITS:</b>	<b>BERLIN TOUR OPTIONS 1X, 1 &amp; 2:</b> £ 300 per person <b>BERLIN TOUR OPTIONS 3 &amp; 4:</b> £ 150 per person
<b>ADD-ON TOUR DEPOSITS:</b>	<b>Poland / Krakow, Slovakia &amp; Vienna 7 days / 6 nights</b> £ 200 per person <b>Poland / Krakow 4 days / 3 nights</b> £ 100 per person
<b>FINANCIAL PROTECTION:</b>	<i>Flight information is provided by T&amp;FT as an agent of Gold Medal Travel Group through which flights can be booked and protected by ATOL 2916. All other package payments are covered by T&amp;FT's Financial Failure Indemnity Insurance through International Passenger Protection Ltd</i>
<b>FINAL TOUR PAYMENTS:</b>	<b>Friday 4<sup>th</sup> May 2018</b> – payment of all outstanding balances due for all tour & event services