

**EUROPEAN ATHLETICS  
TEAM CHAMPIONSHIPS**

Final Programme / Dec 2016

## LILLE

23 - 25 June **2017**

We are offering a choice of package durations to the EATC with the top 12 European nations competing in a joint men and women's competition. The EAA has decided that there will now be heats for the 100m, 200m, 400m plus 100m / 110m / 400m Hurdles events on the Friday evening rather than the two "time trials" of recent years subject to variable conditions for these events with athletes then ranked by time. The qualifiers from the Friday heats will then graduate to "finals" in these events on the Saturday & Sunday along with the other track events. The field events will also be spread over the 3 sessions in order to showcase these in an improved format.

**OPT 1: Fri 23 - Tue 27 June 5 days / 4 nights**    **OPT 3: Fri 23 - Sun 25 June 3 days / 2 nights**  
**OPT 2: Fri 23 - Mon 26 June 4 days / 3 nights**    *Ad Hoc durations on request*

### EATC WEEKEND PROGRAMME

**23 June** Travel to Lille for OPT 1, 2 & 3 clients direct by Eurostar or air + rail  
**Lille Tour by bus & walking 15.00-17.30 hrs** / Evening – EATC session  
**24 June** Morning free / Afternoon EATC session  
**25 June** Morning free / Afternoon EATC session / Dep. Lille for OPT 3 clients  
**Evening T&FT Group Party – exclusive venue with 3 course dinner & drinks**  
**26 June** Morning / Afternoon free in Lille - dep. Lille for OPT 2 clients  
**Ypres & First WW Battlefield Tour 09.00 – 17.30 or 21.30 hrs**  
*includes bus, guides, 3 museum entrance fees & lunch & optional Menin Gate ceremony*  
**27 June** Morning in Lille - dep. Lille for OPT 1 clients

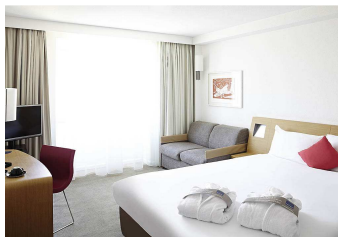
### OPTIONAL EXCURSIONS:

Our programme's schedule includes a **Lille Bus & Walking tour** and also an **Ypres First World War battlefield, museums & memorials excursion**: with 2017 the centenary of the battle of Passchendaele this tour includes visiting the museum, memorials and trenches there. Plus the famous "behind the lines" Talbot House in Poperinge and the "In Flanders Field museum" in Ypres. Clients can choose to either depart Ypres late afternoon to return to the UK that day or ideally stay for that evening's moving **Menin gate "Last Post" remembrance ceremony** which will require booking our 4 nights package staying in Lille until 27 June.

### HOTEL OPTIONS

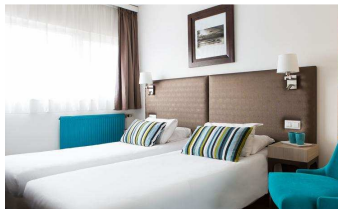
#### 4\* Novotel Lille Centre Gares

This comfortable 4\* Hotel is within a short walk of the Grand Place and the old town. Standard en suite rooms have a kettle for tea & coffee, a fridge, and a safe. Executive rooms have a mini-bar fridge & espresso machine. A substantial American buffet breakfast is included. There is a bistro restaurant and bar & fitness gym.



#### 3\* Hotel Lille Europe

This 3\* Hotel is of contemporary design and is also within a short walk of the old town and the Novotel. All standard en suite rooms have a mini-bar. A substantial continental buffet breakfast is included with a daily hot dish. The comfortable first floor lounge has views across the city park.



### TRANSPORTATION OPTIONS TO LILLE

**EUROSTAR: OPTIONS 1 & 2** ex / to London & Ebbsfleet  
Fri 23 June dep. London 10.58 hrs via Ebbsfleet arr. Lille 13.26 hrs  
Mon 26 June dep. Lille 15.36 or 20.30 hrs via Ebbsfleet arr. London 16.05 or 21.03 hrs  
Tue 27 June dep. Lille 15.36 hrs via Ebbsfleet arr. London 16.05 hrs  
**EUROSTAR: OPTION 3:** ex / to London & Ebbsfleet  
Fri 23 June dep. London 10.58 hrs via Ebbsfleet arr. Lille 13.26 hrs  
Sun 25 June dep. Lille 20.30 hrs via Ebbsfleet arr. London 21.03 hrs

**FLIGHTS:** ex Bristol, Birmingham, Manchester, Newcastle & Edinburgh to Brussels  
Travel directly from Brussels airport by rail to Lille via Brussels Zuid station – trains run hourly during the day and it takes 72 mins at a cost of approx £ 30 each way.

## TFFRA1 / 2017

### PACKAGE PRICES – Per Person:

TOUR OPTION	Room Type	4* Hotel	3* Hotel
<b>1:</b> 4 nights	Single Room	£ 499	£ 379
	Exec Tw /Dble	£ 389	-
	Twin / Double	£ 329	£ 279
<b>2:</b> 3 nights	Single Room	£ 399	£ 299
	Exec Tw /Dble	£ 314	-
	Twin / Double	£ 269	£ 229
<b>3:</b> 2 nights	Single Room	£ 309	£ 239
	Exec Tw /Dble	£ 249	-
	Twin / Double	£ 219	£ 189

### Package Option Prices Include:

- ◆ Hotels on Bed & Breakfast Basis
- ◆ T&FT Group Drinks Reception
- ◆ Tram tickets to / from venue
- ◆ Services of T&FT Staff & Local Guides
- ◆ EATC T&FT Events Programme & Athletics Spectator Guide
- PLUS optional package extras**
- ◆ Lille Bus & Walking Tour - £ 25 / person
- ◆ T&FT Group Dinner / Party - £ 35 / person
- ◆ Ypres First World War Tour - £ 95 / person

### TRAVEL OPTION PRICES:

<b>EUROSTAR</b> incl. hotel transfers:	from £ 105	
<b>FLIGHTS to BRUSSELS</b> – incl. luggage:		
ex BRISTOL	BMI	from £ 129
ex BIRMINGHAM	Brussels Air	from £ 149
ex MANCHESTER	Brussels Air	from £ 149
ex NEWCASTLE	BMI	from £ 179
ex EDINBURGH	Brussels Air	from £ 169

### EVENT TICKETS – all 3 sessions

**CAT 1: Finish Line** £ 30    **Cat 2:** £ 20

### PARIS or BRUSSELS ADD-ON TOUR:

You can add-on to your trip by travelling to Paris or Brussels by rail for as many nights as you wish – **prices available upon request**

### WORKING IN PARTNERSHIP WITH



### PAYMENTS:

**TOUR DEPOSIT:** £ 100 per person + event tickets + optional rail travel or flights + insurance  
**FINAL PAYMENT DUE:** Fri 21 April 2017

### FINANCIAL PROTECTION

Flight bookings made by T&FT as an agent of Gold Medal Travel Group are protected by ATOL 2916.

All other payments for rail travel, hotels and event tickets and all other services are covered by T&FT's Financial Failure Indemnity Insurance provided by International Passenger Protection Ltd so that you are fully protected for all monies paid to T&FT – this very important cover is included in your tour package cost.